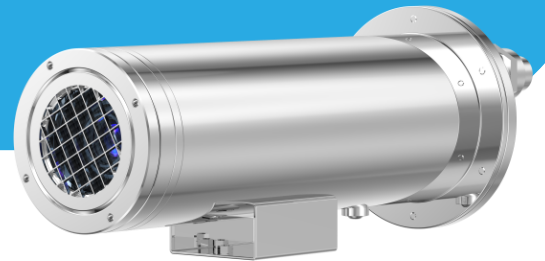




SN-TPH6406DA-F

Explosion-proof Bullet Thermal Camera



Key Features

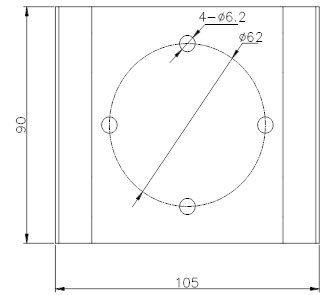
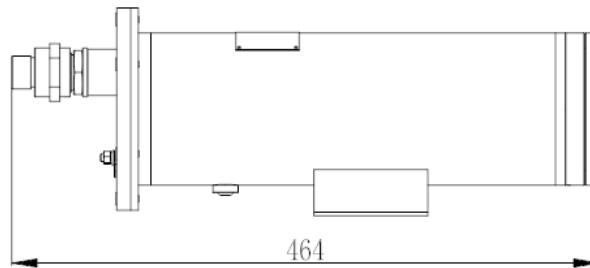
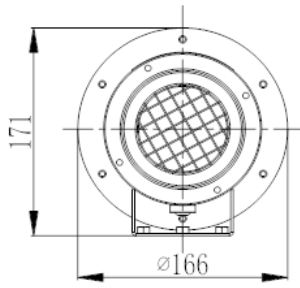
- Uncooled VOx Micro bolometer with 640×512 resolution
- 9/15/25/35/50 mm fixed lens optional
- NETD ≤ 40mK
- Support temperature monitoring exception alarm
- Support 3 temperature measurement rule types (spot, line, area)
- Support human/vehicle detection and fire point detection
- Intelligent analysis: intrusion, single line crossing, double line crossing, loitering, wrong-way, people counting, enter area, leave area
- Material: 316L Stainless steel
- IP68

Specification

Thermal Camera					
Detector Type	Uncooled VOx Micro bolometer 640×512				
Resolution	Sensor is 640×512. Image can be scaled up to 1280×1024				
Pixel size	12μm				
Spectral Range	8 to 14μm				
Thermal Sensitivity (NETD)	≤ 40mK				
Lens Type	Fixed focal length				
Focus Control	Free focus				
Focal Length	9mm	15mm	25mm	35mm	50mm
F No.	F1.0	F1.0	F1.0	F1.0	F1.0
Angle of View	H: 48°, V: 38°	H: 29°, V: 23°	H: 17°, V: 14°	H: 12°, V: 10°	H: 8°, V: 7°
Min. Focusing Distance	1.73m (5.7ft)	3.79m (12.4ft)	13m (42.7ft)	25.49m (80.3ft)	52.3m (171.6ft)
Detection Distance (Fire: 1m×1m)	375m (1,230.3ft)	625m (2,050.5ft)	1,042m (3,418.6ft)	1,458m (4,783.5ft)	2,083m (6,834ft)
Detection Distance (Humans: 1.8×0.5m)	375m (1,230.3ft)	624m (2,047.2ft)	1,040m (3412.1ft)	1,456m (4,783.5ft)	2,081m (6,827.4ft)
Detection Distance (Vehicles: 4×1.5m)	1,150m (3,773ft)	1,917m (6,289.4ft)	3,194m (10,479ft)	4,472m (14,671.9ft)	6,389m (20,961.3ft)
Recognition Distance (Humans: 1.8×0.5m)	94m (308.4ft)	156m (511.8ft)	260m (853ft)	364m (1,194.2ft)	520m (1,706ft)
Recognition Distance (Vehicles: 4×1.5m)	288m (944.9ft)	479m (1,571.5ft)	799m (2,621.4ft)	1,118m (3,668ft)	1,597m (5,239.5ft)
Note: The detection ranges are calculated with Johnson's criteria and vary in different weather conditions.					
*Product performance is based on testing in a controlled environment. Your results may vary due to several external and environmental factors.					
Video and Audio					
Main Stream	1280×1024, 1280×720, 640×512 @25fps				
Sub Stream	D1, CIF @25fps				
Bit Rate Control	CBR/VBR				
Bit Rate	Main stream:100Kbps to 8Mbps, Sub stream: 100Kbps to 6Mbps				
Region of Interest	Off / On (8 Zone, Rectangle)				
Smart Encode	Support				
Image					
Image Setting	Brightness, Sharpness, Contrast				
Mirror	Support				
Pseudo-color Setting	White-hot/Black-hot/Rainbow/Ironbow etc. up to 17 modes				
Privacy Masking	Off / On (5 Area, Rectangle)				
Flat-Field Calibration	Support				
Noise Reduction	2D/3D DNR				
Privacy Masking	Support				
Smart Function					
Smart Alarm	Motion detection, I/O alarm, Disk alarm, IVS alarm, Temperature detection & alarm				

Intelligent Functions	Human detection, Vehicle detection and Fire point detection
Intelligent Analysis	Intrusion, Single line crossing, Double line crossing, Loitering, Wrong-way, Enter area, Leave area Support alarm triggering by specified target types (human and vehicle), People counting
Temperature Detection	
Temperature Detection	3 temperature measurement rule types, 20 rules in total, 1 full screen, 19 others (spot, areas, line).
Temperature Alarm	Temperature difference alarm, Threshold alarm, Temperature rise alarm
Accuracy	±2°C (35.6°F) / ±2%
Response Time	≤ 30ms
Temperature Range	-20°C to 150°C (-4°F to 302°F)
Network	
Protocols	IPv4/IPv6, HTTP, RTSP/RTP/RTCP, TCP/UDP, DHCP, DNS, PPPOE, SMTP, 802.1x
Interoperability	ONVIF, CGI, SDK
Web Viewer	<IE11, Chrome, Firefox, Microsoft Edge
Web Language	English, Chinese, Polish, Italian, Portuguese, Spanish, Russian, French, Czech, Hungarian
Interface	
Network Interface	1 Ethernet (10/100 Base-T) RJ-45 Connector
Audio Interface	1ch input, 1ch output
Alarm Interface	1ch input, 1ch output
RS485	Support
Reset Button	Built-in
SD Card Slot	Built-in Micro SD card slot, up to 256GB
Electrical	
Power Supply	100 to 240 VAC
Power Consumption	Max 25 W
Working Temperature	-40°C to 60°C (-40°F to 140°F)
Storage Conditions	0 to 90% RH
Certifications	CE/FCC
Ingress Protection	IP68
Casing	SUS316L
Dimensions	464 × 166 × 171mm (18.27 × 6.54 × 6.73 inch)
Net Weight	10 kg
Ordering Information	
Model	Description
SN-TPH6406DA-F09	Focal Length: 9mm
SN-TPH6406DA-F15	Focal Length: 15mm
SN-TPH6406DA-F25	Focal Length: 25mm
SN-TPH6406DA-F35	Focal Length: 35mm
SN-TPH6406DA-F50	Focal Length: 50mm

Dimensions (mm)



Accessories

Optional:



SN-BK401A-SS
Wall Mount



SN-BK400-SS(P/F/D)
Junction Box



SN-CPL10A-SS
Washing Tank



Flexible Tube